



**Building Systems**



**The Good Iron People**

# One Brand.



# One Focus.

## Behlen Building Systems

The Behlen name is renowned for providing quality building systems made by craftsmen with a heritage that dates back over 70 years. We are “The GOOD IRON People” and it shows in every building – every time.

## Commitment to Quality and Continuous Improvement

Behlen has maintained ISO 9001 Certification since 1999 and is the first metal building manufacturer in the United States to achieve International Accreditation Service (IAS) AC472 Accreditation.

## IAS AC472 Accreditation

Specifically developed for metal building systems, IAS AC472 Accreditation provides assurance that a metal building manufacturer and its staff have a world class quality system in place for:

- Primary framing fabrication
- Light-gauge welded fabrication
- Cold-formed fabrication
- Engineering

**Behlen Building Systems’ IAS AC472 Accreditation offers contractors, architects, code officials, and building owners many key advantages that expedite the building process including:**

- Compliance with the special inspection requirements in Chapter 17 of the International Building Code®**
- Eliminates the need for additional inspections**
- Cost savings related to code compliance of metal building fabrication; quicker acceptance of plans by building officials**
- Added assurance the metal building manufacturer and its staff have been thoroughly scrutinized by independent non-biased and objective third party auditors**



Mike Emanuel

### Ease in the field makes a big difference...

*I've been a full time steel erector for 16 years, putting up several metal building brands, and I can say with confidence that of*

*all the structures I've put together – Behlen is by far the easiest. Behlen buildings require the least amount of work in the field and I don't have to use the torch or welder.*

### Allow us to be more competitive...

*I love the new roof system and the ease in which it goes together. It saves on labor. Behlen has a simpler design with not as many components. These things allow us to be more competitive.*

### Suggestions we've made resulted in change...

*We've made many suggestions over the years and I've noticed the suggestions we've made resulted in change. We were one of the first builders to install the ZL-16™ Vertical Leg Standing Seam roof and they listened - actually trying to input our suggestions.*

### They get me to the right person with the answer...

*When you call Behlen, they get you to the person who can resolve things right away. I don't have to go through several different people to get an answer. They get me to the right person. That's the hands-on approach Behlen has had...well forever, and I hope that never changes.*

Mike Emanuel

North Central Builders, Hartington, Nebraska



Redmond, OR



Beatrice, NE



Idaho Falls, ID



Orange City, IA



Marlin McCormick

*Our cooperative's Board of Directors had some big decisions to make after suffering the loss of our main office and retail warehouse to a tornado. For both sites, we chose an all-steel building system because we wanted a facility that would be functional for many years and one that would be strong enough to tolerate the variable weather conditions of our geographic area.*

*Right from the start, the staff at Behlen, both in the field and at the plant, took time to ask us questions and to review with us what it was that we wanted as the end result. The Behlen team recognized our interests and helped us achieve our goals by designing buildings that would serve our needs and the needs of our customers. Behlen acted professionally and with respect while assisting us from design to completion of the buildings.*

*Behlen worked closely with our local erector/contractor to see that the buildings went together as planned. The drawings provided by Behlen were easily understood and as a result, the Behlen buildings came together quickly.*

*These attractive and highly functional Behlen buildings have allowed our employees more efficient and effective ways to provide our customer/owners the products and service they demand. The buildings are solid and attractive and they provide a safe environment from which we conduct business.*

*Behlen is a professionally-managed company that employs people who listen and who help people. **We are very pleased with our Behlen buildings and we will choose Behlen with future building opportunities.***

*Marlin McCormick, Farmers Elevator & Exchange Company  
Monroe City, Missouri*





**Gary Dible**

*We chose a metal building system because it is superior and much more tolerant of water than a post frame, which is very important with an enclosed wash bay. Also, if a steel building sustains damage, it is much more likely to be easily repairable and to be made like new. To obtain the spans and loads needed for our application, we felt steel was the only way to go.*

*There are many Behlen buildings built in the community by our builder that are still in service after many years of hard use. Behlen was very responsive to my questions and issues. **I felt very comfortable that the people involved understood how the building was going to be used and had good ideas to consider.***

*Since our Behlen building was completed, the recovery rate in our shop has improved and floor traffic has increased beyond our expectations. Our sales have steadily grown in the short time we have been here and my employees are now proud of the attractive, well lit, safe facility where they come to work. We are also a Honda ATV/Motorcycle dealer, and the increased foot traffic has really impacted this business.*

*Behlen had some distinct advantages - a great local contractor, a hands on rep that wanted to make sure things are right, and Behlen is still a company that when you call - you can talk to a human being.*

*Overall, we were very satisfied with our building, and would choose Behlen again.*

*- Gary Dible - 21st Century Equipment – Sidney, Nebraska*



**Bend, OR**



**Driggs, ID**



**Havre, MT**



**Olathe, KS**

# Good Iron. GREAT Experience!

*Precision manufacturing resulting in steel that fits up right!*



Extra high strength steel panels (up to 80 ksi) for an added level of quality beyond other suppliers

Coped eave/rake flashing for a superior finished look

Premium Galvalume® base steel; state-of-the-art paint finish to keep colors looking sharp

Attractive two-piece framed opening flashing



Industrial-grade, aesthetically pleasing gray primer in accordance with SSPC specifications

Flexibility in design allows for customized structural features

Optional liner panel provides added protection and a clean, finished look







*I took these photos on Friday April 11, 2009, the 10th day of erection at MEPCO Mine, Morgantown, West Virginia. You can see, we will sheet next week, and the material handling building is already complete. We will complete in about five weeks. Great building from Behlen... parts are perfect, and we really appreciate the take-off drawings for the structural steel cladding!!*

*As this is our first "Behlen" – I am very happy with the overall quality of steel/ paint, and especially the perfection of having all parts delivered, and fitting together exactly per the construction drawings!*

*Mark D. Caskey  
President  
STEEL NATION, Inc.  
Canonsburg, PA*

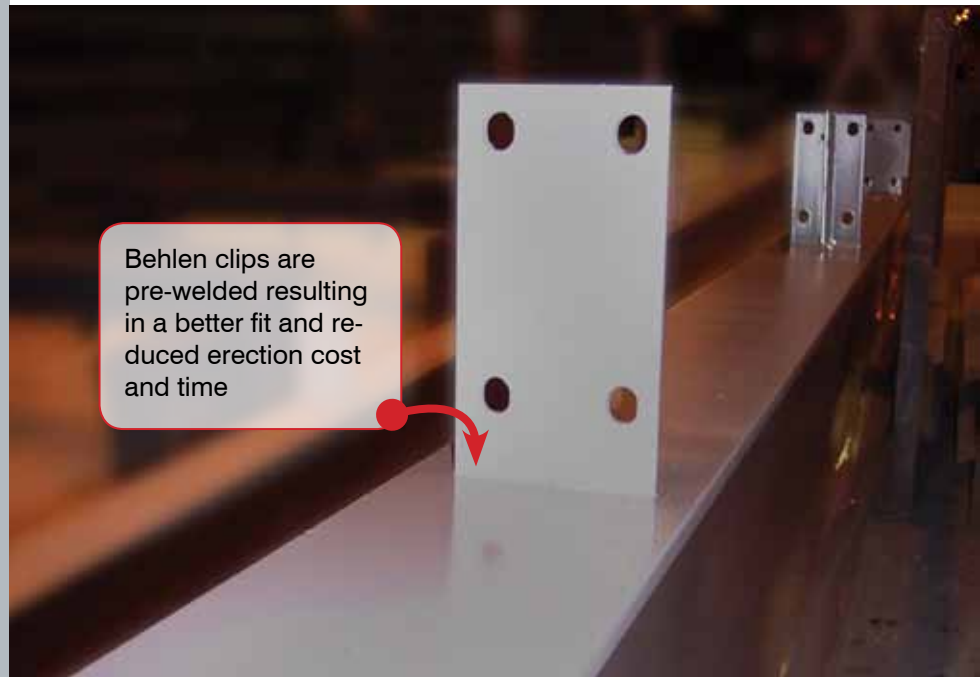


Pittsburgh, PA

## Design Build

Authorized Behlen Builders must be experienced and held in high regard by the construction industry to meet our qualifications. A Behlen Builder will partner with you to develop a sound, well-defined budget and get the greatest return for your investment. You can continue to handle the day-to-day needs of your business rather than deal with construction details. You can rest assured knowing your Behlen builder is your single source responsibility for your project.

## Steel that fits up right!



Behlen clips are pre-welded resulting in a better fit and reduced erection cost and time

## Flexible, Attractive Designs

From a simple warehouse to a complex, multi-story facility, flexibility is a key benefit of Behlen Building Systems.

- ☑ Retail Facilities
- ☑ Offices
- ☑ Dealerships
- ☑ Churches and Schools
- ☑ Sports Facilities
- ☑ Self-Storage
- ☑ Hangars
- ☑ Factories and Warehouses
- ☑ Agriculture and Livestock Arenas
- ☑ Retrofit Roofing

### Imagination

Incorporate metal, glass, wood, stucco, brick and other architectural building materials.

### Future Growth

Behlen buildings can be easily designed for fast, economical additions or other enhancements.

### Savings

Behlen buildings can easily incorporate energy efficient insulation systems for long-term heating and cooling savings. Plus, our durable components and quality construction minimize maintenance requirements.



Battle Creek, MI



Columbus, NE



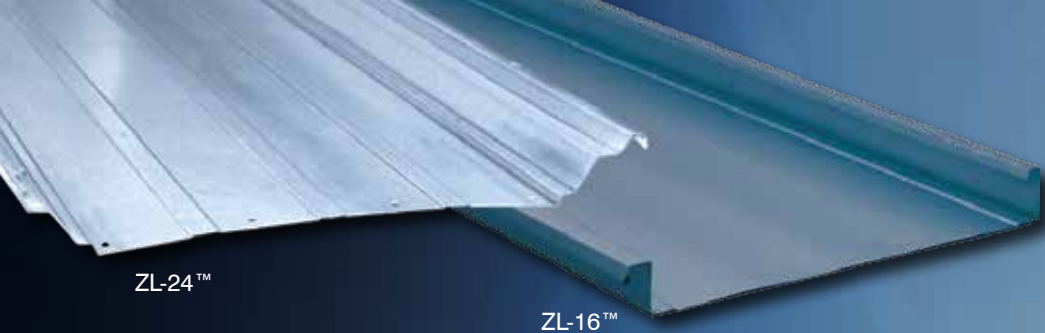
Boise, ID



Janesville, WI



Union Town, OH



ZL-24™

ZL-16™



### Corrugation Closure

#### Three Distinct Advantages:

- ☑ Made from high density polyethylene, this closure helps the mastic form a tighter seal than the typical metal closure other roof systems offer.
- ☑ The closures also have a subtle black finish to help create the clean, uniform look of the ZL-24 Standing Seam Roof System
- ☑ Helps maintain modularity

## Roof Systems

- ☑ ZL-24™ Standing Seam Roof System
- ☑ ZL-16™ Architectural Standing Seam

### Reliable

The technology of the patented ZL-24™ and ZL-16™ roof systems offers considerable benefits to the roof designer, roof installer, contractor, and building owner.

### Weather Resistant

The ZL-24™ and ZL-16™ technology provides assurance that the sealant is protected from severe stress during high wind because of its location within the seam.

### Cost-Efficient Installation

Unlike other roof systems on the market, the ZL-24™ and ZL-16™ do not require seaming as each individual panel is installed. The result – a roof that is installed quickly, efficiently, and without costly wear and tear caused by excess traffic on the unfinished roof.

### Easy to Seam

Even operators with limited experience can accomplish a good seam. The ZL-24™ and ZL-16™ seam is larger by design allowing the seamer to stay locked in until the seaming process is completed.

### Consistency in Design

In almost every case, the ZL-24™ or ZL-16™ roof system is accomplished with consistent purlin spacings, panel sizes, and clips throughout the entire roof.



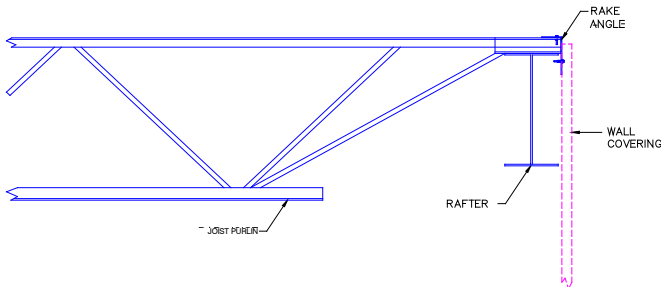
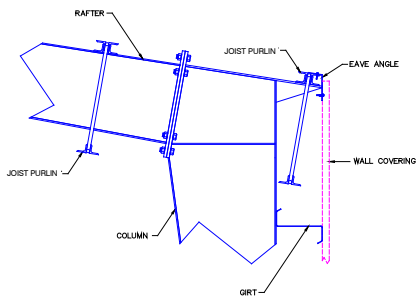


## Structural Systems

Your Behlen building can be configured in nearly limitless combinations of widths, lengths, and heights. This flexibility and the addition of other materials such as block, brick, glass, and pre-cast empowers Behlen with the ability to provide virtually any architectural presentation our customers desire. We can turn the “look” you envision into a reality.

### Behlen Long Bay Building Systems

- ☑ Economical – provides bay lengths over 60 feet maintaining the efficiency of building with steel.
- ☑ Versatile – can be combined with hardwall systems (masonry, pre-cast, and tilt-up construction) as well as metal wall panels. Can also be utilized with a variety of roof systems including B-deck and built up roof systems, providing a competitive option with conventional construction methods.
- ☑ Durable – joist purlins are manufactured in accordance with the Steel Joist Institute (SJI).
- ☑ Efficient – a perfect match for Behlen Building Systems ZL-24™ Standing Seam Roof System.



Fully bolted connections are available resulting in faster, lower cost construction



## Building Green and Sustainability



More building owners are taking sustainability into consideration when constructing new facilities. These are important factors when seeking to achieve credits with **LEED certification (Leadership in Energy and Environmental Design)** and in achieving an **EPA Energy Star® Cool Roof rating**.

### Metal is considered a green building material for the following reasons:

- ☑ Saves time on installation and requires minimal disruption to job site
- ☑ Improves energy efficiency and comfort
- ☑ Reuses and recycles waste material – reducing landfills
- ☑ Does not produce off-gassing as no on-site painting is needed
- ☑ Offers a better life cycle return on investment
- ☑ **Cool metal roofs reduce heat island effects (Energy Star/cool paint finishes)**

### A Behlen building offers these advantages when applying for LEED Certification:

- ☑ All colored panels qualify as having “**Cool Colors**” which means they reflect more of the sun’s rays, lower the roof’s surface temperature, and help reduce the amount of air conditioning needed to cool the building
- ☑ Limitless design flexibility (e.g., daylighting options and highly efficient insulation systems)
- ☑ Lower maintenance and insurance costs
- ☑ Behlen steel contains high recycled content and is 100% recyclable

Leading edge tools such as the Behlen Recycled Content Calculator will provide you with essential documentation needed to apply for LEED Certification.



*LEED Certification for this project pending.*

Havre, MT



## Exterior Wall Systems

Choose clean, economical Behlen panels or incorporate a combination of alternate building materials:

- ADP-1
- ADP-2
- Factory insulated panels
- Wood
- Glass
- Brick

*The choice is yours -  
you have complete design freedom.*

ADP 1

ADP 2



Tulsa, OK



Redmond, OR



Hannibal, MO



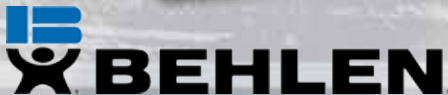
Fountain, CO



Emmett, ID

## What does it mean to do business with the Good Iron People?

- ☑ You're part of a culture where your business truly matters. Our Partners in Progress (employees) have a vested interest in helping you win in the marketplace.
- ☑ Our company's Leadership Team is actively engaged and live in the same Midwestern community where our buildings are manufactured ensuring your voice is always heard.
- ☑ We believe in Mutual Trust and Respect and it shows in every building – every time.
- ☑ A drive for Value Added Customer Satisfaction. After all, it's the pinnacle of our quality system.
- ☑ Dedicated Project Managers who oversee the entire process of your order through delivery.
- ☑ A determined "will to win" work ethic when it comes to helping our Builders succeed.
- ☑ The lines of communication are always open; every team member is ready to take your call.
- ☑ Every Behlen Builder matters. We are one brand focused on one builder network.
- ☑ Our experienced engineering team is willing to take on the challenges of complex building projects.
- ☑ We're in it together with you - our success is dependent upon your success.



Look: [www.behlenbuildingsystems.com](http://www.behlenbuildingsystems.com)

Call: 1.800.228.0340

Visit: 4025 E. 23rd St., Columbus, NE 68601

AD-18020E 5-10

